

**Pediatric HIV/AIDS Cohort Study (PHACS)**  
**Adolescent Master Protocol (AMP / PH200) and AMP Up (PH300)**  
**Annual Administrative Report**

Report Date: May 6, 2022

Data Retrieval Date: April 1, 2020

**Created by:**

Zhongli J. Zhang

Kunjal Patel

Alessandra Kovac

Denise Jacobson

Paige Williams

**Data Management by:**

Laurie Hyzy

Alexandria DiPerna

*The Pediatric HIV/AIDS Cohort Study (PHACS) network is supported by the Eunice Kennedy Shriver National Institute of Child Health and Human Development with co-funding from other NIH institutes through cooperative agreements with the Harvard T.H. Chan School of Public Health [grant number HD052102] and the Tulane University School of Medicine [HD052104].*

## Table of Contents

TABLE OF CONTENTS .....	2
TABLE OF TABLES.....	3
TABLE OF FIGURES .....	4
1 ENROLLMENT AND DEMOGRAPHIC CHARACTERISTICS.....	5
1.1 Enrollment.....	5
1.2 Demographic Characteristics .....	5
1.3 Entry Visit and Current Status .....	5
1.4 Select Follow-up Characterisitcs as of Last Clinic Visit .....	5
2 CHARACTERISTICS OF PARTICIPANTS STILL ON STUDY.....	6
2.1 Age and HIV Clinical Characteristics .....	6
2.2 ARV Use in the AMP and AMP Up Studies .....	6
3 TABLES AND FIGURES .....	7

## Table of Tables

<b>Table 1: AMP - Study Enrollment by Cohort and Quarter</b> .....	7
<b>Table 2: AMP Up - Study Enrollment by Cohort and Quarter</b> .....	8
<b>Table 3: AMP - Study Enrollment by Site</b> .....	9
<b>Table 4: AMP Up - Study Enrollment by Site</b> .....	9
<b>Table 5: AMP - Enrollment by Previous Protocol Participation</b> .....	10
<b>Table 6: AMP Up - Enrollment by Previous Protocol Participation</b> .....	11
<b>Table 7: AMP - Enrollment Demographics and Consent Information</b> .....	12
<b>Table 8: AMP Up - Enrollment Demographics and Consent Information</b> .....	13
<b>Table 9: AMP and AMP Up - Entry Visit Status</b> .....	14
<b>Table 10: AMP and AMP Up - Study Status and AMP Up Enrollment</b> .....	14
<b>Table 11: AMP/AMP Up Select Follow-up Characteristics of All Enrolled Participants with an Entry Visit as of Last Clinic Visit</b> .....	15
<b>Table 12: AMP and AMP Up - Age as of Last Visit of Participants Still on Study</b> .....	16
<b>Table 13: AMP Up - Clinical Characteristics as of Last Visit of Participants Living with Perinatal HIV Still on Study</b> .....	17
<b>Table 14: AMP Up - Individual ARV Drugs at Entry</b> .....	18
<b>Table 15: AMP Up - Individual ARV Drugs at Last Clinical Visit for Participants Still On Study</b> .....	19
<b>Table 16: AMP - Lifetime Exposure to ARV Drug Classes and Individual Drugs, From Reported Regimens</b> .....	20

## Table of Figures

Figure 1: AMP/AMP Up - ARV Trends Over Time .....	21
Figure 2: AMP/AMP Up - NRTI Use, 1993 - 2019 .....	22
Figure 3: AMP/AMP Up - NNRTI Use, 1993 - 2019 .....	23
Figure 4: AMP/AMP Up - PI Use, 1993 - 2019.....	24
Figure 5: AMP/AMP Up - FI/EI and INSTI Use, 1993 - 2019.....	25

## 1 Enrollment and Demographic Characteristics

### 1.1 Enrollment

**Table 1** and **Table 2** show enrollment by cohort and quarter into AMP and AMP Up, respectively. AMP first enrolled youth living with perinatal HIV (YPHIV) in the first quarter of 2007 and youth who were perinatally HIV-exposed but uninfected (YPHEU) in the second quarter of 2007. Enrollment into AMP ended in 2009 with 451 YPHIV and 227 YPHEU; caregivers continue to change/enroll. AMP Up first enrolled YPHIV and YPHEU participants in the second quarter of 2014 and is ongoing. **Table 3** and **Table 4** show enrollment by cohort and site into AMP and AMP Up, respectively.

**Table 5** summarizes prior participation in approved IMPAACT and other network protocols among AMP participants. **Table 6** shows the number of AMP Up participants who were previously enrolled in AMP and other protocols.

### 1.2 Demographic Characteristics

Demographic characteristics and consent information of the participants in AMP and AMP Up are summarized in **Table 7** and **Table 8**, respectively.

### 1.3 Entry Visit and Current Status

The number of entry visits in AMP and AMP Up are shown by HIV status in **Table 9**. Of the participants enrolled in AMP, 448 of 451 (99%) YPHIV and 226 of 227 (99.6%) YPHEU reported an entry study visit. Of the participants enrolled in AMP Up, 598 of 599 (100%) YPHIV and 119 of 119 (100%) YPHEU have reported an entry study visit.

**Table 10** shows the study status of AMP participants and enrollment into AMP Up for those who have reached 18 years-of-age. Of the AMP participants age 18 and older (N=634), 510 (80%) completed the study, 122 (19%) were lost to follow-up, and 2 (1%) were still on study. Of the 18+ that completed the study, 384 (75%) have already enrolled in AMP Up. Of the 18+ lost to follow-up, 29 (24%) have already enrolled in AMP Up. In the last row, **Table 10** also shows the study status of AMP Up participants.

### 1.4 Select Follow-up Characteristics as of Last Clinic Visit

Selected follow-up characteristics of all enrolled participants with an entry visit as of last clinic visit are summarized by study (AMP vs AMP Up), HIV infection status and sex in **Table 11**. Such characteristics include age, pregnancy measures (ever been pregnant and the number of completed pregnancies), HIV seroconversion and death. Completed pregnancies include live births, spontaneous/elective abortions and still births. No AMP YPHEU participants seroconverted to HIV, but one male AMP Up YPHEU participant seroconverted to HIV. Of 209 male and 239 female AMP YPHIV participants, 3 and 2 have died, respectively. Of 231 male and 367 female AMP Up YPHIV participants, 4 and 10 have died, respectively.

## 2 Characteristics of Participants Still on Study

### 2.1 Age and HIV Clinical Characteristics

The age of AMP and AMP Up participants still on study at their last clinical visit is shown by HIV status in **Table 12**. **Table 13** shows HIV clinical characteristics and ARV regimens at the last visit of YPHIV AMP Up participants still on study.

### 2.2 ARV Use in the AMP and AMP Up Studies

**Table 14** and **Table 15** show the frequencies of ARV drugs among YPHIV AMP Up participants still on study used at the entry and last clinical visit, respectively. **Table 16** shows the frequencies of lifetime exposure of AMP participants to ARV classes and individual ARV drugs based on reported regimens. A participant is counted as having taken a drug if any of their reported regimens included the drug.

**Figure 1** through **Figure 5** display ARV use among YPHIV participants in combined AMP/AMP Up (treated as a single study) between 1993 and 2019. For each calendar year, lines indicate the percent exposed among the AMP/AMP Up participants born that year or previously. Participants who were off AMP/AMP Up study are included through the year of their off study and participants who were still on study were included through the end of 2019. Participants may be exposed to more than one regimen during a calendar year and contribute to any line indicating a regimen/drug to which they were exposed. **Figure 1** shows ARV regimen trends for AMP/AMP Up participants with the following hierarchical ARV groupings: cART with INSTI/EI/FI > cART with PI > cART with NNRTI > other ART > 1 or 2 NRTIs > No ART. For instance, if a participant was exposed to any INSTI, disregarding whether or not he was exposed to PI or NNRTI, his ARV exposure would be grouped as cART w/ INSTI/EI/FI. No ART indicates a drug holiday of more than 2 months (greater than 56 days). **Figure 2** through **Figure 5** show the frequencies of exposure to ARV drug classes and individual ARV drugs.

### 3 Tables and Figures

**Table 1: AMP - Study Enrollment by Cohort and Quarter**

	Enrollment quarter	Cohort		
		Caregiver (N=588)	YPHIV (N=451)	YPHEU (N=227)
	2007 Q1	8 (1%)	9 (2%)	0 (0%)
	2007 Q2	51 (9%)	52 (12%)	3 (1%)
	2007 Q3	64 (11%)	61 (14%)	12 (5%)
	2007 Q4	74 (13%)	66 (15%)	14 (6%)
	2008 Q1	46 (8%)	33 (7%)	24 (11%)
	2008 Q2	45 (8%)	38 (8%)	14 (6%)
	2008 Q3	53 (9%)	54 (12%)	17 (7%)
	2008 Q4	21 (4%)	12 (3%)	22 (10%)
	2009 Q1	39 (7%)	18 (4%)	39 (17%)
	2009 Q2	77 (13%)	53 (12%)	38 (17%)
	2009 Q3	66 (11%)	42 (9%)	44 (19%)
	2009 Q4	16 (3%)	13 (3%)	0 (0%)
	2010 or Later	28 (5%)	0 (0%)	0 (0%)

*Note: YPHIV: youth living with HIV; YPHEU: youth who were perinatally HIV-exposed but uninfected. Participant enrollment ended in 2009, but caregivers continue to change/enroll.*

*Created by: /home/phacs/actgPH200/monitoring/programs/qad.sas on April 1, 2020*

**Table 2: AMP Up - Study Enrollment by Cohort and Quarter**

		Cohort	
		YPHIV (N=599)	YPHEU (N=119)
Enrollment quarter	2014 Q2	22 (4%)	3 (3%)
	2014 Q3	48 (8%)	13 (11%)
	2014 Q4	52 (9%)	11 (9%)
	2015 Q1	20 (3%)	4 (3%)
	2015 Q2	20 (3%)	12 (10%)
	2015 Q3	37 (6%)	5 (4%)
	2015 Q4	32 (5%)	6 (5%)
	2016 Q1	29 (5%)	8 (7%)
	2016 Q2	44 (7%)	4 (3%)
	2016 Q3	24 (4%)	4 (3%)
	2016 Q4	49 (8%)	4 (3%)
	2017 Q1	40 (7%)	1 (1%)
	2017 Q2	23 (4%)	4 (3%)
	2017 Q3	17 (3%)	2 (2%)
	2017 Q4	7 (1%)	4 (3%)
	2018 Q1	22 (4%)	6 (5%)
	2018 Q2	22 (4%)	3 (3%)
	2018 Q3	17 (3%)	5 (4%)
	2018 Q4	11 (2%)	4 (3%)
	2019 Q1	16 (3%)	5 (4%)
2019 Q2	24 (4%)	2 (2%)	
2019 Q3	10 (2%)	4 (3%)	
2019 Q4	8 (1%)	4 (3%)	
2020 Q1	5 (1%)	1 (1%)	

*Note: YPHIV: Youth living with HIV, YPHEU, Youth who were perinatally HIV-exposed but uninfected*

*Created by: /home/phacs/actgPH300/monitoring/programs/qad.sas on April 4, 2020*



**Table 3: AMP - Study Enrollment by Site**

Enrollment site	Cohort		
	Total (N=678)	YPHIV (N=451)	YPHEU (N=227)
BOSTON CHILDREN'S HOSPITAL	39 (6%)	35 (8%)	4 (2%)
ST. CHRISTOPHER'S HOSPITAL FOR CHILDREN	40 (6%)	27 (6%)	13 (6%)
SAN JUAN RESEARCH HOSPITAL	54 (8%)	27 (6%)	27 (12%)
ST. JUDE CHILDREN'S RESEARCH HOSPITAL	41 (6%)	29 (6%)	12 (5%)
UNIV OF COLORADO HEALTH SCIENCES CENTER	41 (6%)	21 (5%)	20 (9%)
NEW JERSEY MEDICAL CENTER	53 (8%)	46 (10%)	7 (3%)
CHILDREN'S DIAG AND TREAT CTR (S FLOR)	20 (3%)	14 (3%)	6 (3%)
BRONX/LEBANON HOSPITAL CENTER	37 (5%)	17 (4%)	20 (9%)
UNIVERSITY OF MIAMI	57 (8%)	38 (8%)	19 (8%)
TEXAS CHILDREN'S HOSPITAL (BAYLOR)	53 (8%)	23 (5%)	30 (13%)
UNIVERSITY HEALTH SCIENCE CTR (TULANE)	28 (4%)	23 (5%)	5 (2%)
UCSD MEDICAL CENTER	34 (5%)	17 (4%)	17 (7%)
UNIVERSITY OF MARYLAND MED CTR	31 (5%)	23 (5%)	8 (4%)
JACOBI MEDICAL CENTER	53 (8%)	37 (8%)	16 (7%)
CHILDREN'S MEMORIAL HOSPITAL OF CHICAGO	97 (14%)	74 (16%)	23 (10%)

Note: YPHIV: youth living with HIV; YPHEU: youth who were perinatally HIV-exposed but uninfected.

Created by: /home/phacs/actgPH200/monitoring/programs/qad.sas on April 1, 2020

**Table 4: AMP Up - Study Enrollment by Site**

Enrollment site	Cohort		
	Total (N=718)	YPHIV (N=599)	YPHEU (N=119)
BOSTON CHILDREN'S HOSPITAL	39 (5%)	39 (7%)	0 (0%)
ST. CHRISTOPHER'S HOSPITAL FOR CHILDREN	39 (5%)	29 (5%)	10 (8%)
SAN JUAN RESEARCH HOSPITAL	66 (9%)	52 (9%)	14 (12%)
ST. JUDE CHILDREN'S RESEARCH HOSPITAL	56 (8%)	48 (8%)	8 (7%)
UNIV OF COLORADO HEALTH SCIENCES CENTER	53 (7%)	42 (7%)	11 (9%)
NEW JERSEY MEDICAL CENTER	75 (10%)	70 (12%)	5 (4%)
CHILDREN'S DIAG AND TREAT CTR (S FLOR)	33 (5%)	29 (5%)	4 (3%)
BRONX/LEBANON HOSPITAL CENTER	45 (6%)	33 (6%)	12 (10%)
UNIVERSITY OF MIAMI	55 (8%)	48 (8%)	7 (6%)
TEXAS CHILDREN'S HOSPITAL (BAYLOR)	47 (7%)	28 (5%)	19 (16%)
UNIVERSITY HEALTH SCIENCE CTR (TULANE)	32 (4%)	28 (5%)	4 (3%)
UCSD MEDICAL CENTER	36 (5%)	28 (5%)	8 (7%)
JACOBI MEDICAL CENTER	69 (10%)	60 (10%)	9 (8%)
CHILDREN'S MEMORIAL HOSPITAL OF CHICAGO	73 (10%)	65 (11%)	8 (7%)

Note: YPHIV: youth living with HIV; YPHEU: youth who were perinatally HIV-exposed but uninfected.

Created by: /home/phacs/actgPH300/monitoring/programs/qad.sas on April 4, 2020

**Table 5: AMP - Enrollment by Previous Protocol Participation**

Protocol group	Studies	YPHIV (N=451)	YPHEU (N=227)
<b>No Previous Protocol</b>	None	87 ( 19%)	64 ( 28%)
<b>219/219C Only</b>	219/219C	292 ( 65%)	97 ( 43%)
	219	5 ( 1%)	5 ( 2%)
	Total	297 ( 66%)	102 ( 45%)
<b>219/219C + Other</b>	219C+ACTG 316	1 ( 0%)	0 ( 0%)
	219/219C+WITS	17 ( 4%)	7 ( 3%)
	Total	18 ( 4%)	7 ( 3%)
<b>WITS Only</b>	WITS	0 ( 0%)	33 ( 15%)
<b>Other PACTG/IMPAACT</b>	P1057	1 ( 0%)	0 ( 0%)
	ACTG 353	0 ( 0%)	2 ( 1%)
	ACTG 326	0 ( 0%)	1 ( 0%)
	ACTG 316	0 ( 0%)	6 ( 3%)
	ACTG 185	2 ( 0%)	0 ( 0%)
	Total	3 ( 1%)	9 ( 4%)
<b>Other</b>	PACTS HOPE	0 ( 0%)	11 ( 5%)
	LEGACY	46 ( 10%)	0 ( 0%)
	257	0 ( 0%)	1 ( 0%)
	Total	46 ( 10%)	12 ( 5%)

*Note: YPHIV: youth living with HIV; YPHEU: youth who were perinatally HIV-exposed but uninfected.*

*Created by: /home/phacs/actgPH200/monitoring/programs/qad.sas on April 1, 2020*

**Table 6: AMP Up - Enrollment by Previous Protocol Participation**

<b>Protocol group</b>	<b>Studies</b>	<b>YPHIV (N=599)</b>	<b>YPHEU (N=119)</b>
<b>No Previous Protocol</b>	None	69 ( 12%)	0 ( 0%)
<b>AMP Only</b>	PH200	81 ( 14%)	35 ( 29%)
<b>AMP + Other</b>	PH200+P219/P219C	183 ( 31%)	15 ( 13%)
	PH200+P219/P219C+P1074	4 ( 1%)	0 ( 0%)
	PH200+P219/P219C+PH100	19 ( 3%)	45 ( 38%)
	PH200+PH100	7 ( 1%)	24 ( 20%)
	Total	213 ( 36%)	84 ( 71%)
<b>P219/P219C Only</b>	P219/P219C	29 ( 5%)	0 ( 0%)
<b>P219/P219C + Other</b>	P219/P219C+P1074	96 ( 16%)	0 ( 0%)
	P219/P219C+P1074+PH100	25 ( 4%)	0 ( 0%)
	P219/P219C+PH100	27 ( 5%)	0 ( 0%)
	Total	148 ( 25%)	0 ( 0%)
<b>P1074 Only</b>	P1074	27 ( 5%)	0 ( 0%)
<b>P1074 + Other</b>	P1074+PH100	4 ( 1%)	0 ( 0%)
<b>PH100 Only</b>	PH100	28 ( 5%)	0 ( 0%)

*Note: YPHIV: youth living with HIV; YPHEU: youth who were perinatally HIV-exposed but uninfected*

*Created by: /home/phacs/actgPH300/monitoring/programs/qad.sas on April 17, 2020*

**Table 7: AMP - Enrollment Demographics and Consent Information**

		Cohort		
		Total (N=678)	YPHIV (N=451)	YPHEU (N=227)
Sex	Male	328 (48%)	210 (47%)	118 (52%)
	Female	350 (52%)	241 (53%)	109 (48%)
Age at enrollment (yrs)	Median (Q1, Q3)	11 (9, 14)	12 (10, 14)	10 (8, 12)
	7-9	229 (34%)	118 (26%)	111 (49%)
	10-12	235 (35%)	154 (34%)	81 (36%)
	13-15	214 (32%)	179 (40%)	35 (15%)
Race	Asian	6 (1%)	2 (0%)	4 (2%)
	Black or African American	454 (67%)	316 (70%)	138 (61%)
	White	173 (26%)	98 (22%)	75 (33%)
	American Indian	3 (0%)	3 (1%)	0 (0%)
	More than One Race	13 (2%)	9 (2%)	4 (2%)
	Participant does not want to report	17 (3%)	15 (3%)	2 (1%)
	Participant does not know	8 (1%)	6 (1%)	2 (1%)
	Race not available to clinic	4 (1%)	2 (0%)	2 (1%)
Ethnicity	Hispanic or Latino	189 (28%)	109 (24%)	80 (35%)
	Not Hispanic or Latino	485 (72%)	341 (76%)	144 (63%)
	Participant does not want to report	4 (1%)	1 (0%)	3 (1%)
Consent to share IMPAACT, WITS, or medical rec data?	No	4 (1%)	4 (1%)	0 (0%)
	Unknown*	12 (2%)	6 (1%)	6 (3%)
	Yes	662 (98%)	441 (98%)	221 (97%)
Permission to store specimen in repository	No	6 (1%)	5 (1%)	1 (0%)
	Yes	672 (99%)	446 (99%)	226 (100%)
Permission includes genetic studies	No	9 (1%)	8 (2%)	1 (0%)
	Yes	669 (99%)	443 (98%)	226 (100%)

Note: YPHIV: youth living with HIV; YPHEU: youth who were perinatally HIV-exposed but uninfected.

Created by: /home/phacs/actgPH200/monitoring/programs/qad.sas on April 1, 2020

**Table 8: AMP Up - Enrollment Demographics and Consent Information**

		Cohort		
		Total (N=718)	YPHIV (N=599)	YPHEU (N=119)
Sex	Male	288 (40%)	231 (39%)	57 (48%)
	Female	430 (60%)	368 (61%)	62 (52%)
Age at enrollment (yrs)	Median (Q1, Q3)	20 (18, 24)	21 (18, 25)	18 (18, 19)
	Min, Max	18, 39	18, 39	18, 25
	18-19	311 (43%)	213 (36%)	98 (82%)
	20-21	128 (18%)	112 (19%)	16 (13%)
	22-23	72 (10%)	69 (12%)	3 (3%)
	24-25	71 (10%)	69 (12%)	2 (2%)
	26-27	54 (8%)	54 (9%)	0 (0%)
	28-29	19 (3%)	19 (3%)	0 (0%)
	30 or Older	63 (9%)	63 (11%)	0 (0%)
	Race	Asian	4 (1%)	1 (0%)
Native Hawaiian or other Pacific Islander		2 (0%)	2 (0%)	0 (0%)
Black or African American		472 (66%)	397 (66%)	75 (63%)
White		188 (26%)	151 (25%)	37 (31%)
American Indian		4 (1%)	4 (1%)	0 (0%)
More than One Race		16 (2%)	14 (2%)	2 (2%)
Unknown		32 (4%)	30 (5%)	2 (2%)
Ethnicity	Hispanic or Latino	209 (29%)	171 (29%)	38 (32%)
	Not Hispanic or Latino	501 (70%)	423 (71%)	78 (66%)
	Unknown	8 (1%)	5 (1%)	3 (3%)
Permission to store specimen in repository	Yes	713 (99%)	594 (99%)	119 (100%)
	No	4 (1%)	4 (1%)	0 (0%)
	.	1	1	0
Permission includes genetic studies	Yes	710 (99%)	593 (99%)	117 (98%)
	No	7 (1%)	5 (1%)	2 (2%)
	.	1	1	0

Note: YPHIV: youth living with HIV, YPHEU, youth who were perinatally HIV-exposed but uninfected

Created by: /home/phacs/actgPH300/monitoring/programs/qad.sas on April 4, 2020

**Table 9: AMP and AMP Up - Entry Visit Status**

		Study and HIV Status			
		AMP YPHIV (N=451)	AMP YPHEU (N=227)	AMP Up YPHIV (N=599)	AMP Up YPHEU (N=119)
Entry visit status	Visit reported	448 (99%)	226 (100%)	598 (100%)	119 (100%)
	No visit reported	3 (1%)	1 (0%)	1 (0%)	0 (0%)

Note: YPHIV: youth living with HIV, YPHEU, youth who were perinatally HIV-exposed but uninfected

Created by: /home/phacs/actgPH300/monitoring/programs/qad.sas on April 4, 2020

**Table 10: AMP and AMP Up - Study Status and AMP Up Enrollment**

		Cohort		
		Total	YPHIV	YPHEU
AMP study status	Still on study	3 (0%)	2 (0%)	1 (0%)
	Completed study	519 (77%)	340 (75%)	179 (79%)
	Enrollment error / eligibility failure	1 (0%)	0 (0%)	1 (0%)
	Death of participant/parent/guardian	5 (1%)	5 (1%)	0 (0%)
	Withdrawal / loss to follow-up	123 (18%)	84 (19%)	39 (17%)
	Site closure	25 (4%)	18 (4%)	7 (3%)
	Other reason	2 (0%)	2 (0%)	0 (0%)
Ever AMP, age 18+	Completed study	510 (80%)	337 (80%)	173 (82%)
	Lost to follow-up	122 (19%)	84 (20%)	38 (18%)
	Still on study	2 (0%)	1 (0%)	1 (0%)
Ever AMP, age 18+, completed study	Enrolled in AMP Up	384 (75%)	266 (79%)	118 (68%)
	Not enrolled	126 (25%)	71 (21%)	55 (32%)
Ever AMP, age 18+, lost to follow-up	Enrolled in AMP Up	29 (24%)	28 (33%)	1 (3%)
	Not enrolled	93 (76%)	56 (67%)	37 (97%)
AMP Up study status	Still on study	681 (95%)	566 (95%)	115 (97%)
	Death of subject	13 (2%)	13 (2%)	0 (0%)
	Subject incarcerated	8 (1%)	6 (1%)	2 (2%)
	Subject withdrew consent	5 (1%)	5 (1%)	0 (0%)
	PT/parent not willing to adhere to reqs	2 (0%)	2 (0%)	0 (0%)
	Site unable to contact participant/parent	8 (1%)	6 (1%)	2 (2%)

Note: YPHIV: youth living with HIV; YPHEU: youth who were perinatally HIV-exposed but uninfected.

Created by: /home/phacs/actgPH200/monitoring/programs/qad.sas on April 1, 2020

**Table 11: AMP/AMP Up Select Follow-up Characteristics of All Enrolled Participants with an Entry Visit as of Last Clinic Visit**

Characteristic		AMP YPHIV (N=448)		AMP YPHEU (N=226)		AMP Up YPHIV (N=598)		AMP Up YPHEU (N=119)	
		Male (N=209)	Female (N=239)	Male (N=118)	Female (N=108)	Male (N=231)	Female (N=367)	Male (N=57)	Female (N=62)
Age at last visit (years)	Median	17	18	17	17	25	25	21	22
	Q1, Q3	16, 19	17, 18	16, 18	17, 18	22, 27	23, 29	19, 23	21, 24
	7-14	30 (14%)	36 (15%)	18 (15%)	17 (16%)				
	15-17	81 (39%)	75 (31%)	66 (56%)	55 (51%)				
	18-21	96 (46%)	122 (51%)	34 (29%)	36 (33%)	49 (21%)	61 (17%)	32 (56%)	23 (37%)
	22-25	2 (1%)	6 (3%)			80 (35%)	124 (34%)	20 (35%)	32 (52%)
	26-30					83 (36%)	123 (34%)	5 (9%)	7 (11%)
	31-35					17 (7%)	51 (14%)		
	36-40					2 (1%)	7 (2%)		
	41 or older					0 (0%)	1 (0%)		
Ever been pregnant as of last visit*	Yes	.	15 (6%)	.	15 (14%)	.	168 (46%)	.	30 (48%)
	No	.	185 (77%)	.	80 (74%)	.	195 (53%)	.	32 (52%)
	Unknown	.	39 (16%)	.	13 (12%)	.	4 (1%)	.	0 (0%)
Number of completed pregnancies as of last visit	0	.	225 (94%)	.	94 (87%)	.	204 (56%)	.	33 (53%)
	1	.	9 (4%)	.	9 (8%)	.	84 (23%)	.	12 (19%)
	2	.	5 (2%)	.	4 (4%)	.	45 (12%)	.	12 (19%)
	3	.		.	1 (1%)	.	19 (5%)	.	4 (6%)
	4	.		.		.	7 (2%)	.	
	5	.		.		.	6 (2%)	.	1 (2%)
	6	.		.		.	2 (1%)	.	
Seroconverted to HIV as of last visit	No	209 (100%)	239 (100%)	118 (100%)	108 (100%)	231 (100%)	367 (100%)	56 (98%)	62 (100%)
	Yes							1 (2%)	0 (0%)
Death	No	206 (99%)	237 (99%)	118 (100%)	108 (100%)	227 (98%)	357 (97%)	57 (100%)	62 (100%)
	Yes	3 (1%)	2 (1%)			4 (2%)	10 (3%)		

\*Based on chart abstraction. Completed pregnancies include live births, spontaneous/elective abortions, and stillbirths.  
 Note: YPHIV: Youth living with HIV. YPHEU: Youth who were perinatally HIV-exposed but uninfected

Created by: /home/phacs/actgPH200/monitoring/detlprogs/amp\_ampup\_seropregnancy.sas on April 2, 2020

**Table 12: AMP and AMP Up - Age as of Last Visit of Participants Still on Study**

		Study and HIV Status			
		AMP YPHIV (N=2)	AMP YPHEU (N=1)	AMP Up YPHIV (N=566)	AMP Up YPHEU (N=115)
Age (years)	Median	16.31	16.48	25.28	22.02
	Q1, Q3	16.19, 16.44	16.48, 16.48	22.51, 28.17	20.16, 23.55
	15-17	2 (100%)	1 (100%)	0 (0%)	0 (0%)
	18-21	0 (0%)	0 (0%)	111 (20%)	56 (49%)
	22-25	0 (0%)	0 (0%)	217 (38%)	51 (44%)
	26-30	0 (0%)	0 (0%)	173 (31%)	8 (7%)
	31-35	0 (0%)	0 (0%)	56 (10%)	0 (0%)
	36-40	0 (0%)	0 (0%)	8 (1%)	0 (0%)
	41 or older	0 (0%)	0 (0%)	1 (0%)	0 (0%)

*Note: YPHIV: youth living with HIV; YPHEU, youth who were perinatally HIV-exposed but uninfected. Age is based on the date of last scheduled visit or last contact.*

*Created by: /home/phacs/actgPH200/monitoring/detlprogs/current\_status.sas on April 4, 2020*



**Table 13: AMP Up - Clinical Characteristics as of Last Visit of Participants Living with Perinatal HIV Still on Study**

		<b>Study AMP Up (N=566)</b>
CDC Category	N/A/B	412 (73%)
	C	154 (27%)
CD4 (cells/mm <sup>3</sup> )	Median	579
	0-250	107 (19%)
	251-500	120 (22%)
	501-750	164 (29%)
	751-1000	103 (19%)
	1001+	62 (11%)
CD4 Percent	Median	30
	< 15%	97 (18%)
	15-25%	107 (19%)
	25% or more	348 (63%)
HIV-1 RNA (copies/mL)	Median	400
	0-400	404 (72%)
	401-5000	55 (10%)
	5001-50000	72 (13%)
	50001+	29 (5%)
ARV regimen	cART with INSTI/EI/FI	372 (66%)
	cART with PI	57 (10%)
	cART with NNRTI	66 (12%)
	Other ARV	33 (6%)
	No ARV	30 (5%)
	Missing ARV information	7 (1%)

*Note: HIV-1 RNA viral load measurements less than 400 copies/mL are treated as equal to 400 copies/mL when calculating the median. Clinical characteristics are based on last recorded measurement.*

*Note: ARV data for some AMP Up participants who were not enrolled in AMP are not yet included. ARV regimen categories are hierarchical.*

*Created by: /home/phacs/actgPH200/monitoring/det/progs/current\_status.sas on April 4, 2020*

**Table 14: AMP Up - Individual ARV Drugs at Entry**

<b>Class Drug</b>	<b>Label</b>	<b>N</b>	<b>Percent</b>
NRTI ftc	FTC/Coviracil	344	58.3
NRTI tdf	Tenofovir/TDF	251	42.5
NRTI _3tc	3tc/Efavir/Lamivudine	119	20.2
NRTI taf	Tenofovir Alafenamide (TAF)	111	18.8
NRTI abc	Abacavir	94	15.9
NRTI zdv	ZDV/AZT	40	6.8
NRTI ddi	Didanosine/Videx/DDI	14	2.4
NRTI d4t	Stavudine/d4T	10	1.7
NNRTI rpv	Rilpivirine/TMC-278	98	16.6
NNRTI etr	Etravirine/TMC-125	38	6.4
NNRTI efv	Efavirenz/Sustiva/DMP-266	33	5.6
NNRTI nvp	Nevirapine/Viramune/NVP	6	1.0
PI rtvboost	Ritonavir/Norvir/RTV (Boost)	200	33.9
PI drv	Prezista/Darunavir/TMC-114	167	28.3
PI atv	Atazanavir/ATV	62	10.5
PI kal	Kaletra	34	5.8
PI nfv	Nelfinavir/Viracept/NFV	9	1.5
PI sqv	Saquinavir/Invirase/Fortovase/SQV	3	0.5
PI tpv	Tipranavir	2	0.3
PI fpv	Fosamprenavir	1	0.2
FI/EI mvc	Maraviroc	10	1.7
FI/EI enf	T-20/Pentafuside/Enfuvirtide/ENF	3	0.5
INSTI dtg	Dolutegravir/GSK-1349572	135	22.9
INSTI evg	Elvitegravir/GS-9137	73	12.4
INSTI ral	Raltegravir/Isentress	66	11.2
INSTI bic	Bictegravir	14	2.4
BOOSTER cob	Cobicistat	116	19.7

Created by: /home/phacs/actgPH300/monitoring/detlprogs/entry\_visit\_arv.sas on April 4, 2020

**Table 15: AMP Up - Individual ARV Drugs at Last Clinical Visit for Participants Still On Study**

<b>Class Drug</b>	<b>Label</b>	<b>N</b>	<b>Percent</b>
NRTI ftc	FTC/Coviracil	381	67.2
NRTI taf	Tenofovir Alafenamide (TAF)	306	54.0
NRTI tdf	Tenofovir/TDF	95	16.8
NRTI _3tc	3tc/Efavirenz/Lamivudine	93	16.4
NRTI abc	Abacavir	80	14.1
NRTI zdv	ZDV/AZT	20	3.5
NRTI d4t	Stavudine/d4T	2	0.4
NRTI ddi	Didanosine/Videx/DDI	2	0.4
NNRTI rpv	Rilpivirine/TMC-278	96	16.9
NNRTI etr	Etravirine/TMC-125	26	4.6
NNRTI efv	Efavirenz/Sustiva/DMP-266	10	1.8
NNRTI nvp	Nevirapine/Viramune/NVP	1	0.2
PI drv	Prezista/Darunavir/TMC-114	157	27.7
PI rtvboost	Ritonavir/Norvir/RTV (Boost)	88	15.5
PI atv	Atazanavir/ATV	32	5.6
PI kal	Kaletra	11	1.9
PI nfv	Nelfinavir/Viracept/NFV	1	0.2
PI sqv	Saquinavir/Invirase/Fortovase/SQV	1	0.2
FI/EI mvc	Maraviroc	9	1.6
INSTI dtg	Dolutegravir/GSK-1349572	167	29.5
INSTI evg	Elvitegravir/GS-9137	111	19.6
INSTI bic	Bictegravir	79	13.9
INSTI ral	Raltegravir/Isentress	39	6.9
BOOSTER cob	Cobicistat	193	34.0

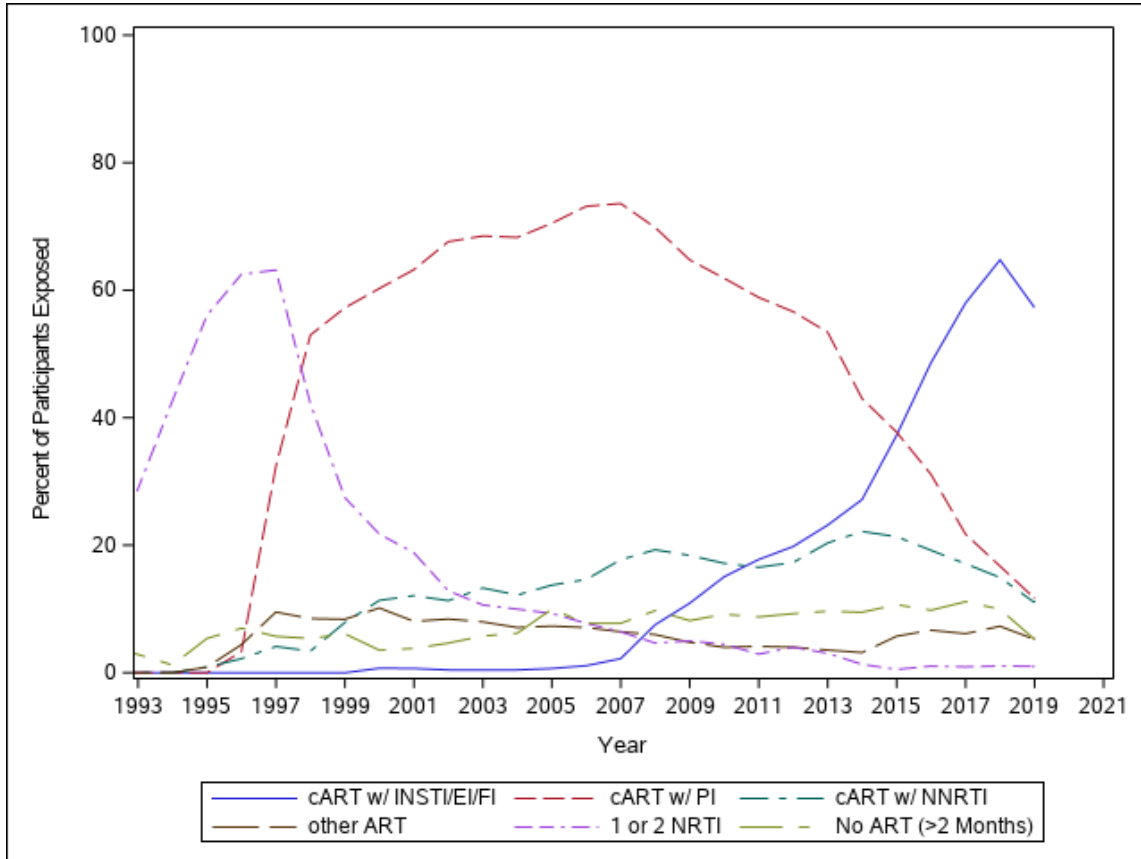
*Created by: /home/phacs/actgPH300/monitoring/detlprogs/current\_arv.sas on April 4, 2020*

**Table 16: AMP - Lifetime Exposure to ARV Drug Classes and Individual Drugs, From Reported Regimens**

<b>Class/Drug</b>	<b>Total (N = 448)</b>
Any NRTI	446 (100%)
Tenofovir/TDF	270 (60%)
FTC/Coviracil	253 (56%)
3tc/Epivir/Lamivudine	417 (93%)
Abacavir	228 (51%)
ZDV/AZT	378 (84%)
Didanosine/Videx/DDI	306 (68%)
Stavudine/d4T	344 (77%)
Zalcitabine/DDC	16 (4%)
Tenofovir Alafenamide	28 (6%)
Any NNRTI	335 (75%)
Efavirenz/Sustiva/DMP-266	205 (46%)
Etravirine/TMG-125	34 (8%)
Nevirapine/Viramune/NVP	157 (35%)
Delavirdine/DLV	2 (0%)
Rilpivirine/TMC-278	50 (11%)
Any PI	407 (91%)
Ritonavir/Norvir/RTV (Only)	139 (31%)
Ritonavir/Norvir/RTV (Boost)	335 (75%)
Kaletra	255 (57%)
Atazanavir/ATV	141 (31%)
Prezista/Darunavir/TMC-114	98 (22%)
Nelfinavir/Viracept/NFV	265 (59%)
Saquinavir/Invirase/Fortavase/SQV	50 (11%)
Amprenavir/APV	30 (7%)
Tipranavir	13 (3%)
Fosamprenavir	15 (3%)
Indinavir/Crixivan/IDV	28 (6%)
Any FI/EI	25 (6%)
Maraviroc	12 (3%)
T-20/Pentafuside/Enfuvirtide/ENF	13 (3%)
Any INSTI	127 (28%)
Raltegravir/Isentress	88 (20%)
Dolutegravir/GSK-1349572	33 (7%)
Elvitegravir/GS-9137	20 (4%)
Bictegravir	

Created by: /home/phacs/actgPH200/monitoring/detlprogs/arv\_figures.sas on April 2, 2020

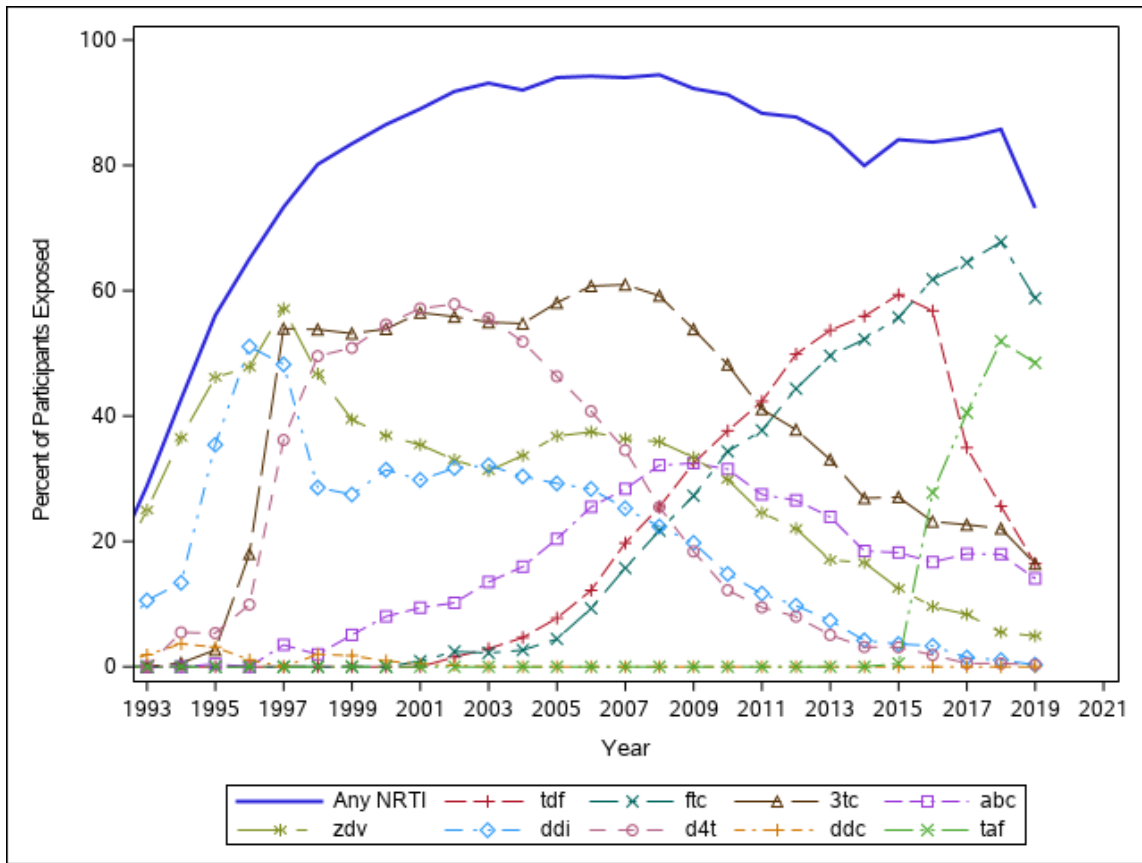
Figure 1: AMP/AMP Up - ARV Trends Over Time



Note: No ART indicates a drug holiday of >56 days.

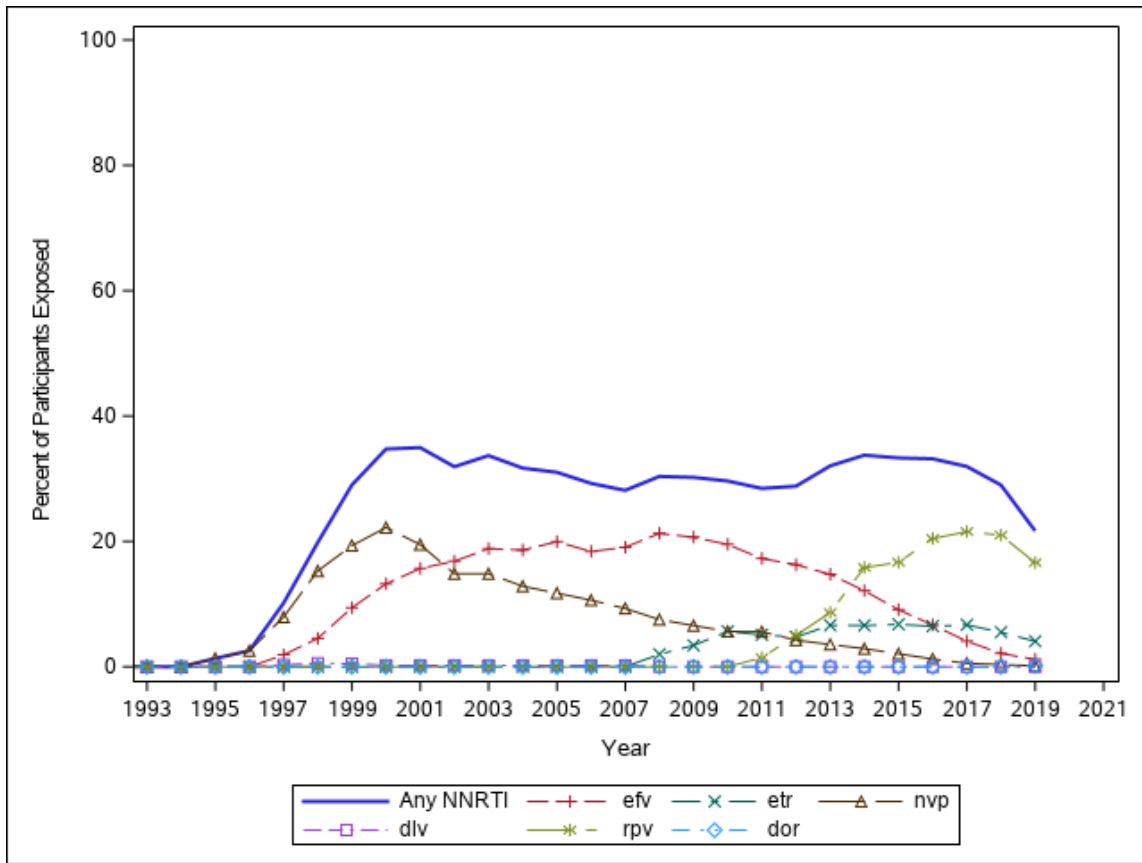
Created by: /home/phacs/actgPH200/monitoring/detlprogs/arv\_figures\_amp\_ampup.sas on April 2, 2020

Figure 2: AMP/AMP Up - NRTI Use, 1993 - 2019



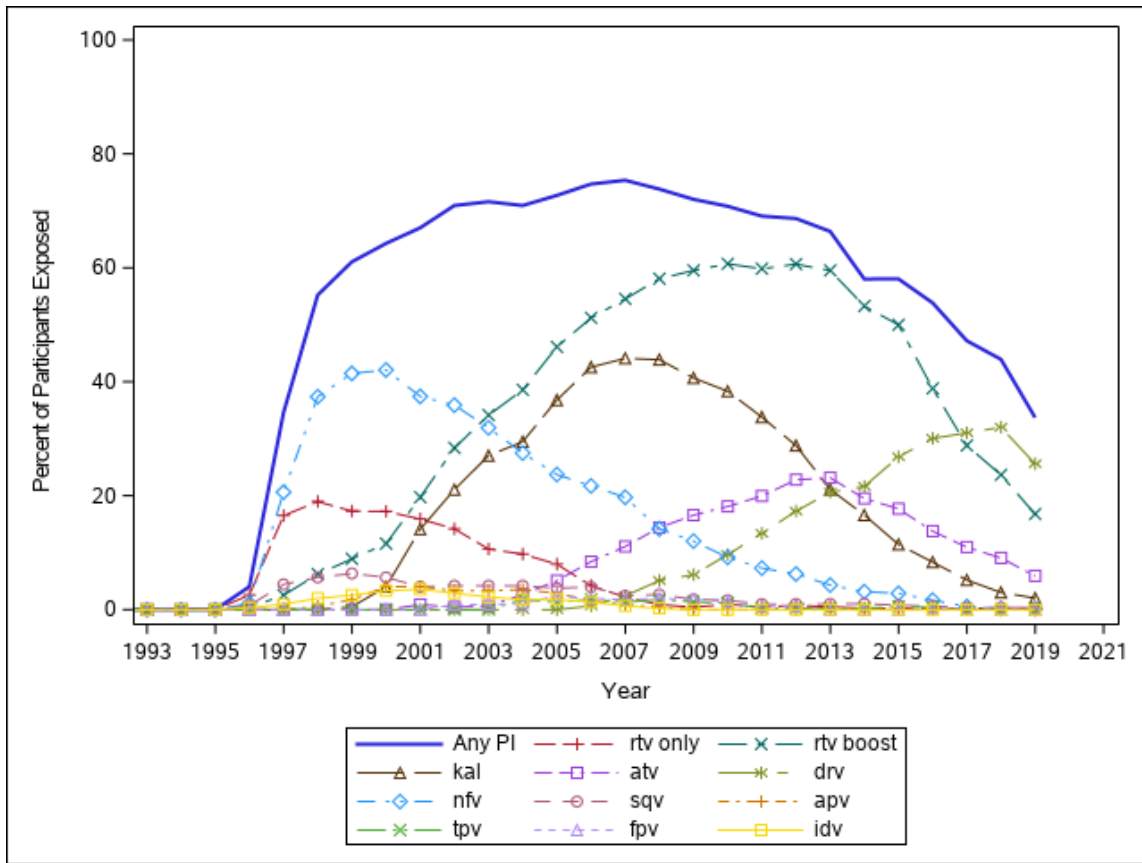
Created by: /home/phacs/actgPH200/monitoring/det/progs/arv\_figures\_amp\_ampup.sas on April 2, 2020

Figure 3: AMP/AMP Up - NNRTI Use, 1993 - 2019



Created by: /home/phacs/actgPH200/monitoring/detlprogs/arv\_figures\_amp\_ampup.sas on April 2, 2020

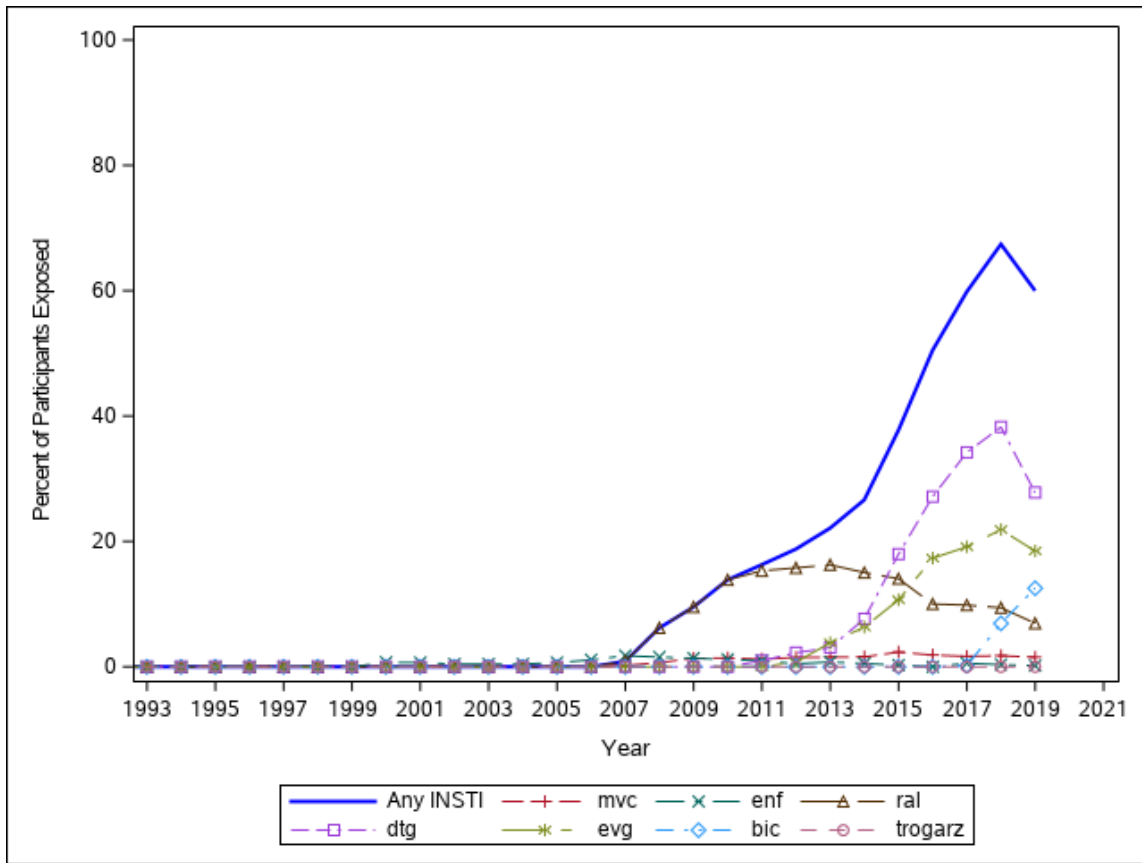
Figure 4: AMP/AMP Up - PI Use, 1993 - 2019



Created by: /home/phacs/actgPH200/monitoring/detlprogs/arv\_figures\_amp\_ampup.sas on April 2, 2020



Figure 5: AMP/AMP Up - FI/EI and INSTI Use, 1993 - 2019



Created by: /home/phacs/actgPH200/monitoring/det/progs/arv\_figures\_amp\_ampup.sas on April 2, 2020